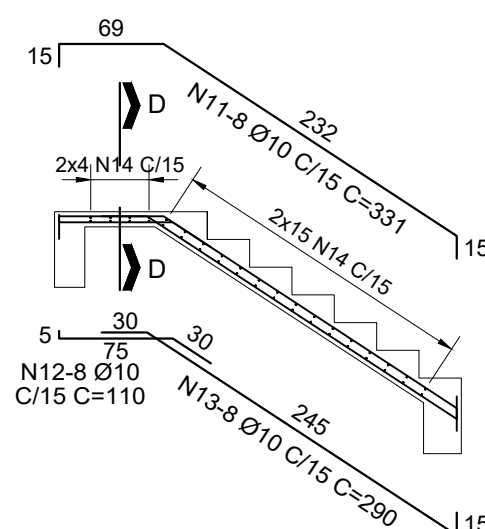
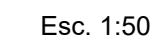
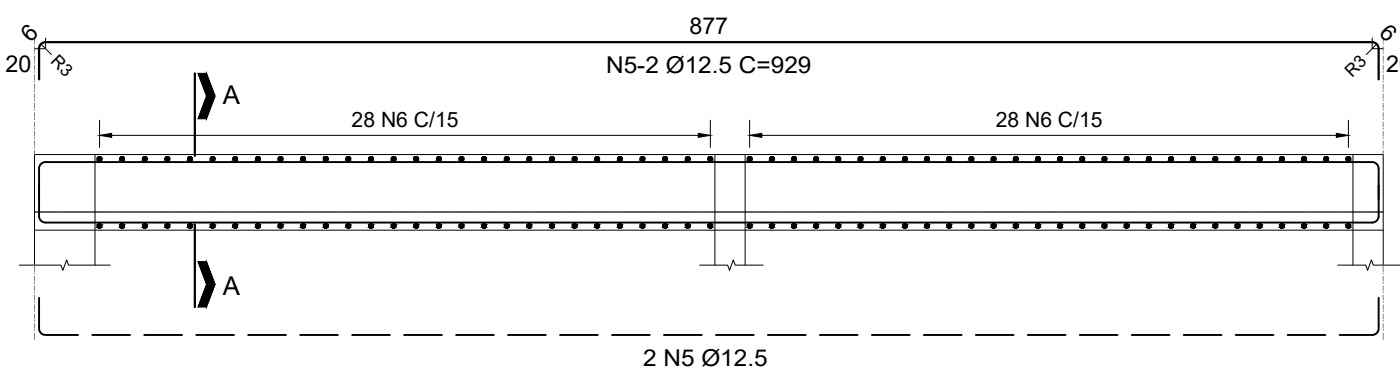
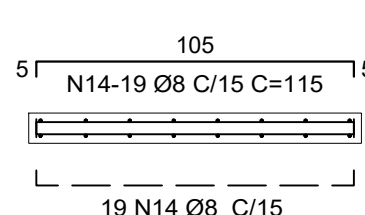


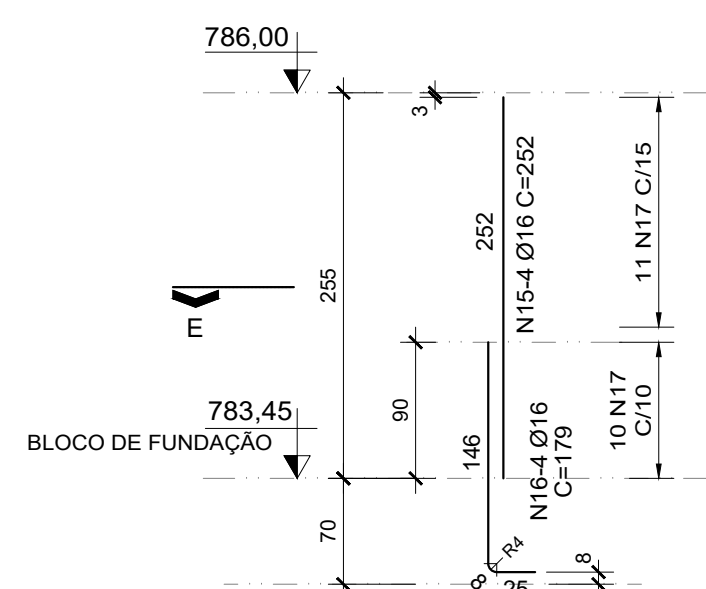
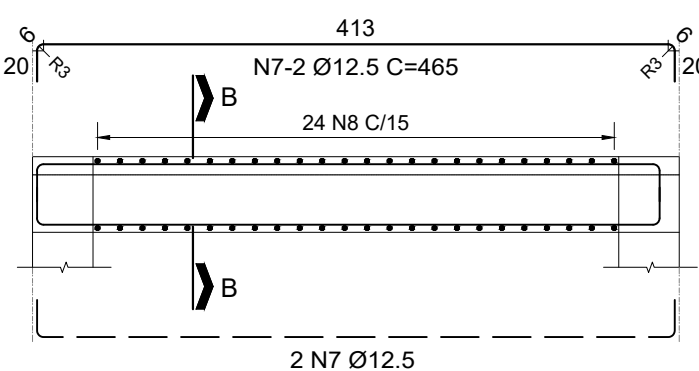
Technical drawing of a rectangular plate. The main view shows a plate with a width of 20 and a height of 50. There are two holes, each with a diameter of 2 N9. A detail view shows a section of the plate with a width of 14 and a height of 44. The material specification is N10-46 Ø6.3 C/15 C=132.



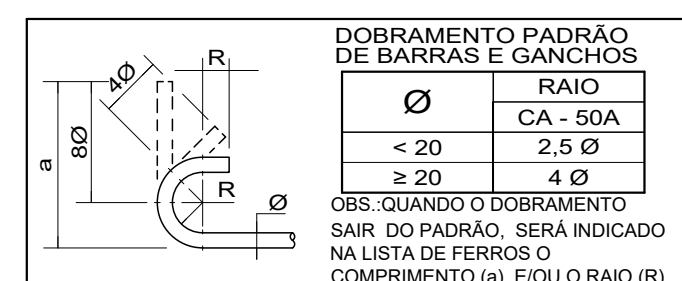
## Esc. 1:25



Technical drawing of a rectangular plate. The main view shows a plate with overall dimensions 50 (height) and 20 (width). It features four holes, labeled "2 N5" at the top and "2 N5" at the bottom. A central slot is indicated by a break line. A detail view on the right shows a rectangular section with dimensions 44 (height) and 14 (width).



20  
40  
14  
34  
N17-21 Ø8  
C=112



- 1 - MEDIDAS EM CENTÍMETRO.
- 2- MATERIAIS:
  - CONCRETO ESTRUTURAL  $f_{ck} = 30 \text{ MPa}$  (FATOR A/C<0,5)
  - AÇO CA50
- 3 - COBRIMENTO PARA ARMADURAS:
  - c = 2,5 cm PARA LAJES
  - c = 3,0 cm PARA DEMAIS ELEMENTOS
- 4 - VERIFICAR TODAS AS MEDIDAS E NÍVEIS NA OBRA.
- 5 - O CONTROLE TECNOLÓGICO PARA GARANTIA DA QUALIDADE DOS MATERIAIS E SERVIÇOS DEVERÃO SEGUIR TODAS AS RECOMENDAÇÕES CONSTANTES DAS SEGUINTE NORMAS DA ABNT: NBR12655, NBR7480, NBR 7481, NBR 7482 E NBR 7483.

TABELA DE FERROS				
N	Ø (mm)	Q	COMPRIMENTOS	
			UNIT.(cm)	TOTAL(cm)
1	10	50	VARIAVEL	21500
2	10	16	509	8144
3	10	19	VARIAVEL	13946
4	6,3	3	CORRIDO	5961
5	12,5	4	929	3716
6	6,3	56	132	7392
7	12,5	8	465	3720
8	6,3	48	132	6336
9	12,5	4	757	3028
10	6,3	46	132	6072
11	10	8	331	2648
12	10	8	110	880
13	10	8	290	2320
14	8	38	115	4370
15	16	20	252	5040
16	16	20	179	3580
17	8	105	112	11760

RESUMO CA-50			
Ø (mm)	kg/m	COMPR.(m)	PESO (kg)
6,3	0.25	257.61	64
8	0.40	161.30	65
10	0.63	494.38	312
12.5	1.00	104.64	105
16	1.60	86.20	138
TOTAL:			684

[illegible]